

How to install the Swivel Base

Step 1

Installation of cross rail

- a) Align points A & B of the cross rail to the corresponding points of the mechanism (raised side towards you).
- b) Insert the four $\frac{3}{4}$ " self-tapping (figure 1) screws and screw them with a $\frac{7}{16}$ " key or wrench.

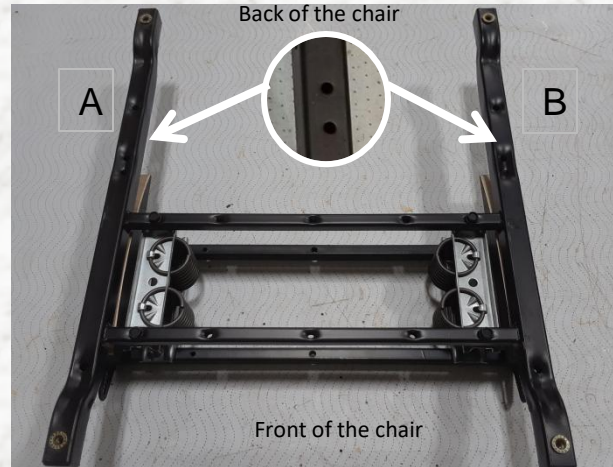


figure 1



View from underneath the furniture

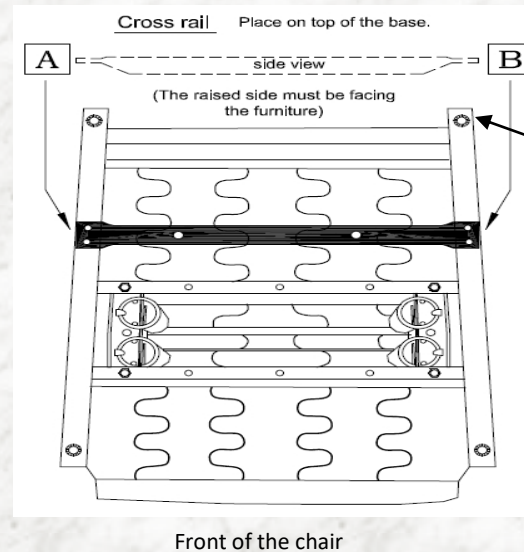


figure 2



Install two legs (figure 2) screwable on the back of the chair

How to install the Swivel Base-next page

Step 2

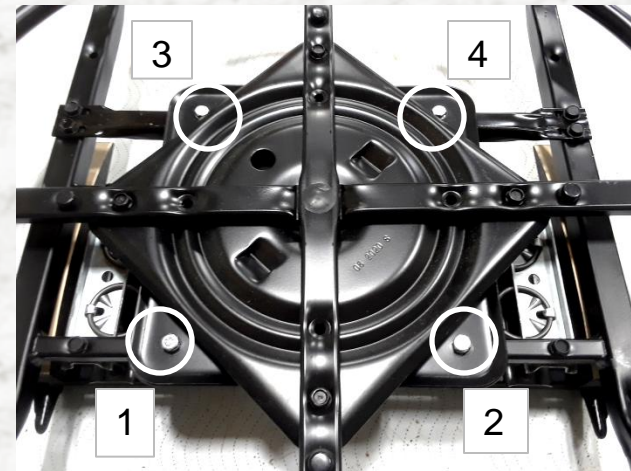
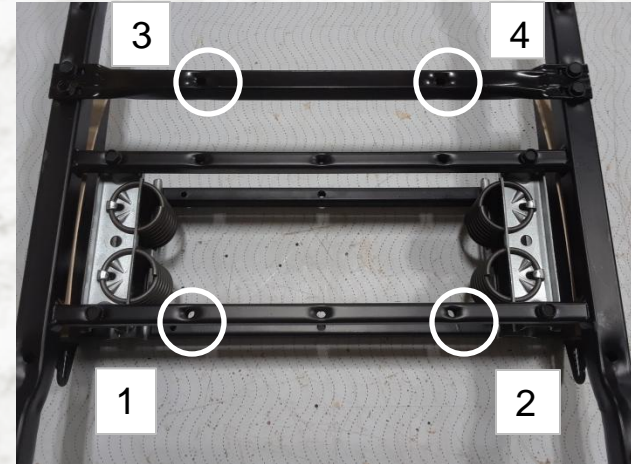
Installation of the swivel base

(It is preferable to start by the front of the chair.)

- a) Align number 1 & 2 of the swivel base to the corresponding numbers of the mechanism.
- b) (Front of the chair) Place the 2 plastic spacers, one on each side, in between the swivel base and the mechanism in position 1 & 2.
- c) Insert two 2" bolts in the holes and place the lock washers, followed by the 1/4" nuts under the bar.
- d) (Back of the chair) Align number 3 & 4 of the swivel base to the corresponding numbers of the mechanism.
- e) Insert two 1 1/4" bolts in the holes and place the lock washers, followed by the 1/4" nuts under the bar.
- f) Screw the 4 bolts tightly with a 7/16" key or a wrench.



Back of the chair



Front of the chair

How to install the Swivel Base-next page

Install the screwable legs ([figure 2](#)) at the back of the chair only ([step 1](#)).

Note: Tools required (not included): 7/16" key or a wrench.

[figure 2](#)



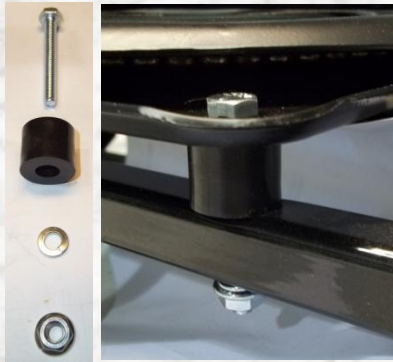
1 & 2 = Front of the chair

(x 2) Bolt 2"

(x 2) Big plastic spacer

(x 2) Lock washer

(x 2) 1/4" nut

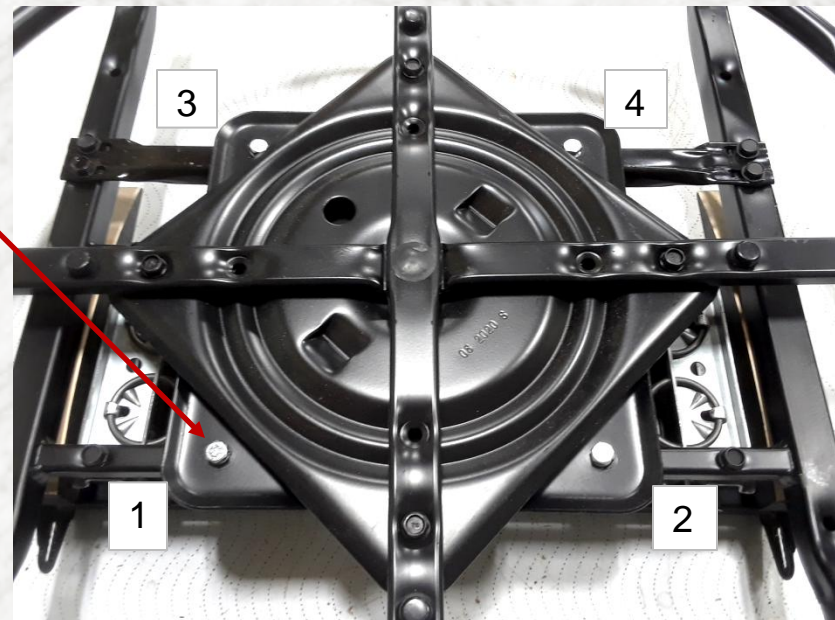
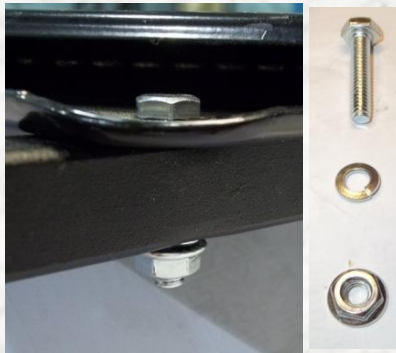


3 & 4 = Back of the chair

(x 2) Bolt 1 1/4"

(x 2) Lock washer

(x 2) 1/4" nut



Front of the chair